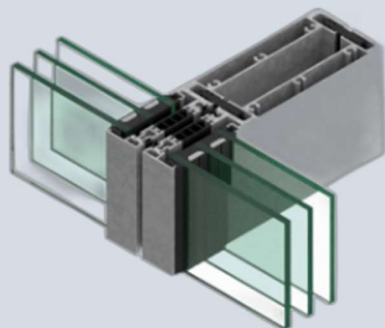




Hansen



Hansen UnitAl

Hansen UnitAl is a unitised curtain wall system for quick closure of the building envelope. It is possible to design the modules with both transparent and infilled areas. The transparent areas can be both fixed glazing and opening vents or a combination of both.

It is possible to create interesting facades by adding extra architecture to the exterior of the facade. This could be aluminium cladding, stone cladding etc..

Construction:	Elements span vertically between the floors. Elements are typically mounted in the top.
Design:	Elevation width of the profile system is 72 mm. Profile depth between 160 and 310 mm. The system supplier HansenConcepts is ISO 9001 certified.
Profiles:	The system is available in a number of profile designs, which can create different visual appearances of the facade.
Glazing range	52-71mm
Insulating zone:	The profiles are insulated with a specially designed thermal break between the aluminium profiles. This breaks the cold bridge throughout the entire length of the profiles. Extra insulation of the rebate is optional.
Variety:	Hansen UnitAl is also found in a Structural Glazing (SG) system, where the glass is held by hidden fittings. For the visual appearance of the façade, the space between the two glass panes is jointed with silicone. Hansen UnitAl can be carried out in a flame retardant version (EI60).
Air permeability:	AE 1200
Water tightness:	RE 1200
Wind load classification:	Serviceability: 1600 Pa Safety: 2400 Pa